

One Good Turn

Coulee Region Woodturners



Chapter of the American Association of Woodturners

February 2023

www.crwoodturner.com

Volume 23, Issue 02

***** Date Change *****

Next Meeting Saturday—February 25—9:00 AM

We are meeting at Luther High School in Onalaska. Entrance is in the back corner, across from the goal posts. Park in the back, adjacent to the back alley. We'll be meeting in the school shop.

See you there.

CRW Activities Schedule

Feb. 25	Ken Garden	French Rolling Pins	
Mar. 18	??	???	
April 15	Dan Wilson	Native Flute Follow-up	
April 30.	Earth Fair	Group Demo—Myrick Park, La Crosse	11 to 5
May 20	Jack Fitzpatrick	Fire Piston	
June 1-4	AAW Symposium, Louisville		
June 17	Aaron Gesicki	Footless Bowl	
July 15			
Aug. 19	Rich Egan	Offset Turning	
Sep. 16			
Oct. 21			
Nov. 11	Mark Palma	To be determined	(Remember, second weekend)
Dec. 16	Christmas	Party Potluck	

Still need volunteers to fill the gaps for the missing months.

Explore AAW virtual events!



Learn and be inspired
in the comfort of your
own home.

More information from and about AAW events in your own shop or home is available at <https://www.woodturner.org/Woodturner/Woodturner/Virtual-Events/Master-Series-Landing-Page.aspx>

If you're a long-term planner—

[https://www.woodturner.org/Woodturner/Woodturner/2023 Louisville](https://www.woodturner.org/Woodturner/Woodturner/2023%20Louisville)

Get ready for
Louisville
in 2023!



2023 Exhibitions

AAW's Gallery of Wood Art, Landmark Center, Saint Paul

February 26–May 19, 2023: Form | Content (2023 POP exhibition)

July 1–December 31, 2023: Out of the Woods (AAW's 2023 member exhibition)

Ongoing: Touch This! Around the Hus—Turning in Scandinavian Domestic Life

**Vintage and historic lathes
Turned items—Exhibits and For Sale**

Visit <https://www.galleryofwoodart.org/>

or email Tib Shaw tib@woodturner.org

Wig Stands

Gundersen's Cancer Center has informed us they are running low on stands. Bob Raasch has delivered the last of the inventory made to date.

So, if inclined, we encourage club members to keep them coming.

Thank you all for your generosity.

Earth Fair - Sunday, April 30

What we would need for a successful Earth Fair—demonstrating and public involvement

- Small Club lathes
- Club grinder
- People to work the lathes. Making small stuff.
- Extension cords
- Blanks for making tops or little bowls
- 75-100 small tops to give away to kids.
- Registration forms for people who want to join
- Brochures to hand out
- Big wooden bowl full of penny candy to give away.
- 4-6 Folding chairs
- Pam has 2 craft show tables for the lathes
- Wig stand display (Bob will be there to talk about the wig stand project)
- We will need 3-4 people to be around throughout the day, starting with set up at 9 AM.
- Two demonstrators turning and a couple to talk to folks and hand out gifts and brochures.
- Tear down at 5.

FOUND IN THE SHAVINGS UNDER MY LATHE

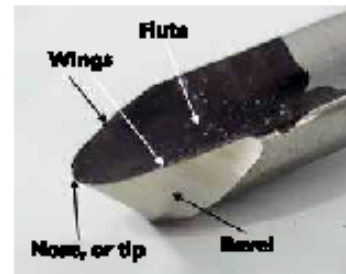
- February demonstrator Ken Garden will discuss turning French rolling pins and how he turns them in a production manner. So, a new twist to an interesting topic.
- Our March demo is still being planned. But it will happen, for sure.
- We have decided to be involved in the Earth Fair at Myrick Park in La Crosse.
- Pam Day is organizing it and we will demonstrate. See the separate list for details.
- This is a family event and kids love tops so your contribution will be a hit.
- Volunteers are needed, just like our other events like Hixon House, Norskedalen and the like.
- Always a good time whether you turn, or just talk about the club with those who stop by or just hang around.
- We will need a group of us to pitch in to make it work.

John Griffiths

A Look at GOUGE GEOMETRY

Lyndal Anthony

Beginners understandably struggle when learning to sharpen their tools. I hear students say that even when they can get a sharp edge on a gouge, it won't cut or it digs into the wood with a catch. *The edge feels and looks sharp, so why am I having trouble with it?* This is where gouge geometry comes in. Bevel shape, wing shape, and bevel angle all play important roles in how a gouge will perform. In this article, I will describe these factors and explain some of the benefits of certain shapes and the pitfalls of others.



Bevel Shapes

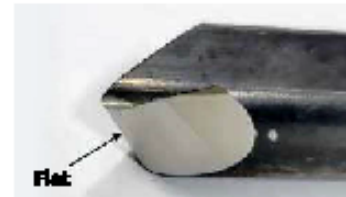
Concave, or hollow-ground, bevel

This drawing exaggerates a convex bevel, or hollow grind. How does this happen? In practice, an 8" (20cm-) diameter grinding wheel naturally creates a hollow grind, but on such a short bevel, you have to look closely to see it. A gouge with a hollow-ground bevel will cut easily since the cutting edge is the most prominent point.



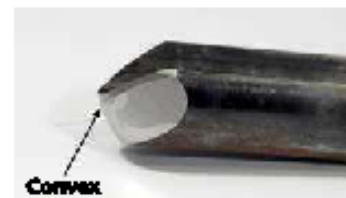
Flat bevel

A truly flat bevel is the natural result of sharpening with a belt system, which has a dead flat platen supporting the tool. A flat bevel works just as well as a hollow-ground bevel because both shapes provide the proper clearance under the cutting edge.



Convex bevel

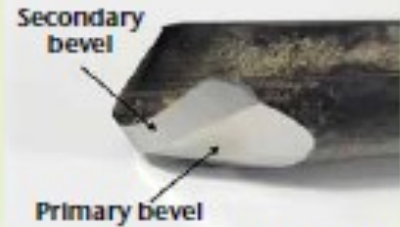
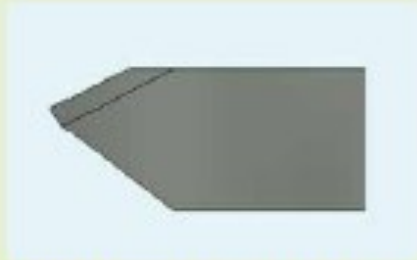
A convex bevel can result from sharpening by hand—i.e., without a jig or system to guide the tool accurately. Sharpening jigs keep the gouge's bevel on one plane. A convex bevel is problematic. For a sharp edge to cut, it has to be the protruding (most prominent) point of contact. A convex roll, or bulge, will contact the wood first, preventing the cutting edge from even engaging the wood. A good way to understand this dynamic is to intentionally sharpen a skew with a convex bevel; it will take some of the aggressiveness out of the skew cut.



Try a Micro Bevel

Rather than having just one continuous bevel, a micro bevel is a smaller, secondary plane on the tool's bevel leading up to the cutting edge. You can add a micro bevel by adjusting certain factors/angles on your sharpening system.

A micro bevel is helpful for the turner because it reduces the "bounce" caused by out-of-round wood or other irregularities. With a single long bevel, when the heel



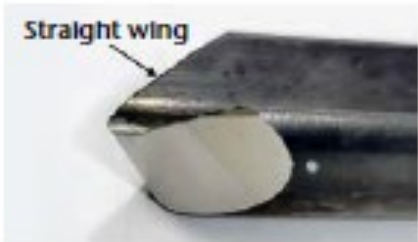
bounces, it causes the cutting edge to also bounce. Another advantage of the micro bevel

is that it makes it much easier to go around a tight (short/small) radius.

Wing Shapes

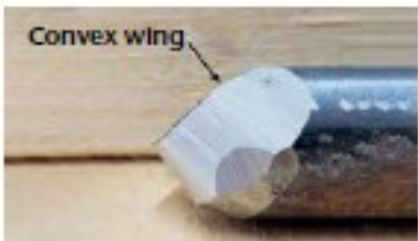
Straight wing

A flat, or straight, wing is my preferred wing shape.



Convex wing

A wing with a slight convex shape works fine also.



Bump near nose

A pronounced bulge on the gouge's wing close to the nose tends to contact the wood first, causing a catch. That part of the tool is off-axis of the centerline of the tool and will "lever" it over, causing a dig-in.



Concave wing

A concave wing is problematic. The rear tip of the wing, being the highest point, can catch the wood, causing the cutting edge to lever over and dig in. »



CRW Mission Statement: To promote, to educate, and to inspire ourselves and others in the fine art of turned wood.

CRW Officers



President

Jim Bloomer

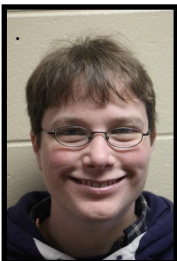
marine9096@gmail.co



Vice President

John Fisher

jdcrow1956@yahoo.com



Secretary

Kris Clough

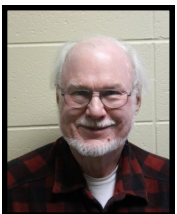
mogoldfish@yahoo.com



Treasurer

Jay Johnson

javejohnson099@centurytel.net

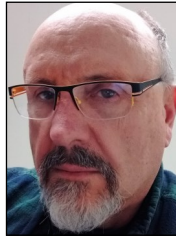


Program Director

John Griffiths

griff@mwt.net

Technical Advisors



Newsletter Editor

Aaron Gesicki

303-551-2450



Club photographer

Kevin Vossler

kvosslerwi@aol.com



Librarian

Jack Fitzpatrick



Webmaster

Ken Grunke

608-625-2412

kengrunke@gmail.com



Tool Czar

Bob Raasch

608-769-3833

raaschb@charter.net

CRW Club Mentors

All areas of turning and finishing. Duane Hill
Onalaska, WI. 608-397-9526

wisawdust@charter.net

Segmented Turning. Phil Miller La Crosse, WI.
792-1497 mpmopc@gmail.com

Experimentation, tool making, and metalworking.

Ken Grunke La Farge, WI 608-625-2412

kengrunke@gmail.com

Spindle turning. John Fisher Holmen, WI.
608- 526-4692 minnow1974@charter.net



Aaron Gesicki / Editor
1317 Woodpark Road
Winona, MN 55987
Phone: 303-551-2450
Email: AaronAGesicki@Gmail.com

"A Turn For the Better"



Next Meeting
Saturday
February 25, 2023

Here's a map to help those who aren't sure where we meet. It's the Luther High School Shop. 1501 Wilson St, Onalaska, WI, 54650 608-783-5435

We'll start the program promptly at 9 am, so get there early to avoid getting a Uecker Seat.

We'll have coffee, so Chocolate donuts are ALWAYS Welcomed.

